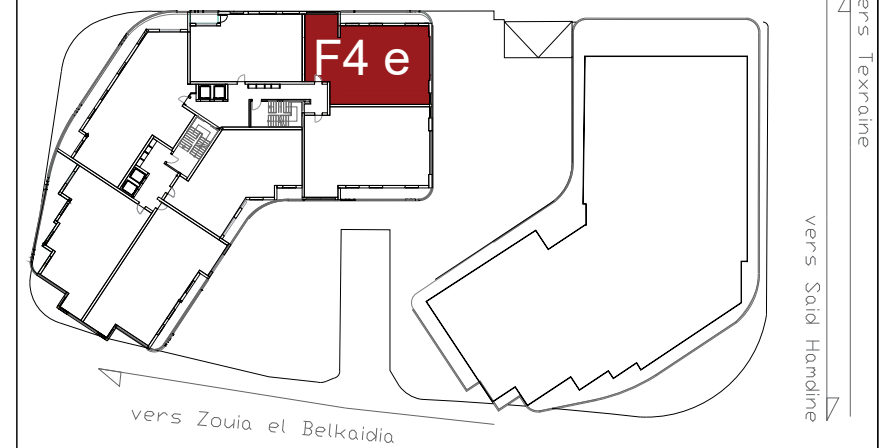


BAT B



Batiment B

Surface utile : 153.61m<sup>2</sup>

Terrasse	15.55m <sup>2</sup>
Séjour	26.34m <sup>2</sup>
Cuisine	17.38m <sup>2</sup>
Chambre 1	21.53m <sup>2</sup>
Chambre 2	21.56m <sup>2</sup>
Chambre 3	16.90m <sup>2</sup>
SDB	6.34m <sup>2</sup>
Hall	4.36m <sup>2</sup>
circulation	11.96m <sup>2</sup>
Rangement	4.63m <sup>2</sup>