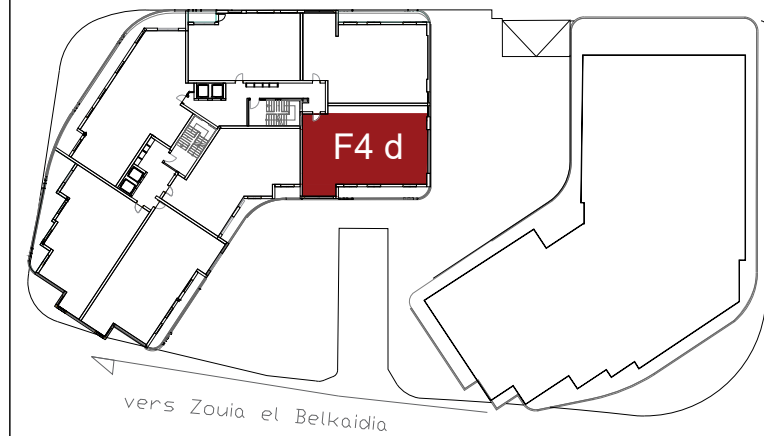




BAT B



Batiment B

Surface utile : 160.27m²

Terrasse	15.62m ²
Séjour	27.88m ²
Cuisine	17.86m ²
Chambre 1	22.89m ²
Chambre 2	22.26m ²
Chambre 3	17.83m ²
SDB	4.61m ²
Hall	4.88m ²
circulation	17.59m ²
Rangement	4.36m ²