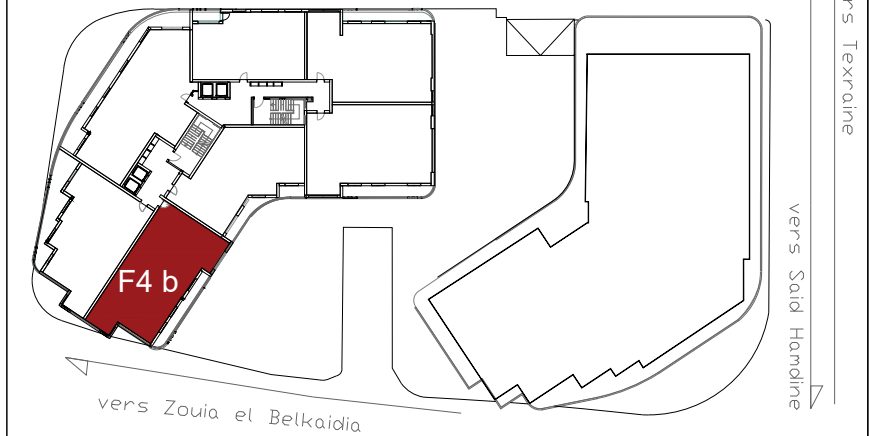




BAT B



Batiment B

Surface utile : 156.44m²

Terrasse	23.40m ²
Séjour	26.50m ²
Cuisine	17.52m ²
Chambre 1	24.53m ²
Chambre 2	14.85m ²
Chambre 3	14.77m ²
SDB	5.62m ²
Hall	7.86m ²
circulation	16.78m ²
Rangement	2.48m ²