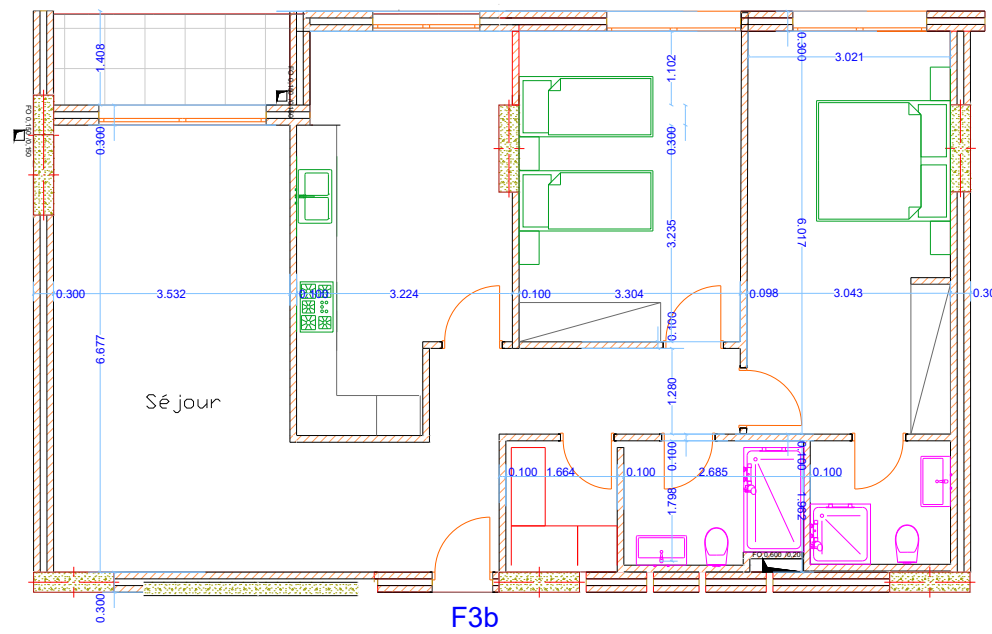
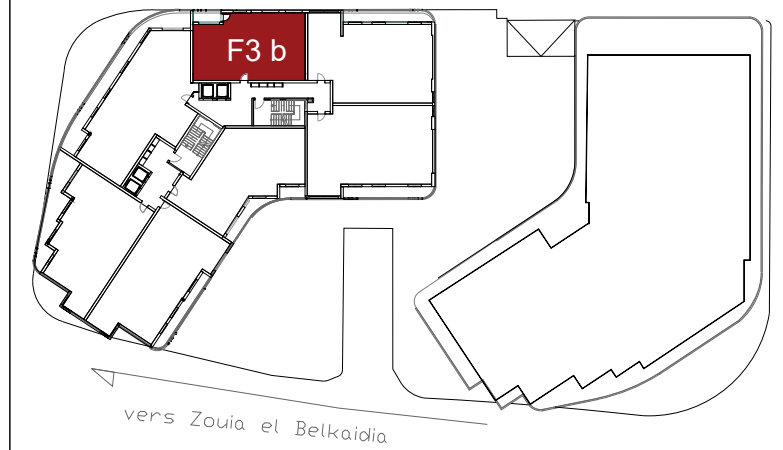


BAT B



Batiment B

Surface utile : 107.60m²

Terrasse	5.53m ²
Séjour	24.51m ²
Cuisine	9.77m ²
Chambre 1	25.53m ²
Chambre 2	17.83m ²
SDB	4.81m ²
Hall	6.44m ²
circulation	7.81m ²
Rangement	3.31m ²